

JSNA ASIA ENTERPRISES LIMITED

Factory Introduction:

工廠介紹

DONGGUAN SOUTH SKY PLASTIC PRODUCTS CO., LTD

东莞南天塑胶制品有限公司



DONGGUAN SOUTH SKY PLASTIC PRODUCTS CO., Limited is located in Dalang Town Dongguan City, covering 90,000 square feet, as Hong Kong's famous import, export and wholesale JSNA ASIA ENTERPRISES LIMITED exclusive investment, specialising in the production of LLDPE STRETCH CAST FILM, BOPP CARTON SEALING TAPE, CLOTH DUCT TAPE, MASKING TAPE and so on.

JSNA ASIA ENTERPRISES LIMITED with more than ten years' experience in import, export and wholesale packaging machinery and materials business in Hong Kong, annual turnover of up to USD150,000,000. Required for business and to increase provide the best service to customers and the highest quality of products, in 2010, exceeded USD200,000,000 invested in Dalang Town Dongguan City, to purchase 90,000 square feet for constructs the factory building, the introduction of the latest and the most advanced automatic LLDPE STRETCH CAST FILM production line of 3 sections, professional in the production of high quality LLDPE STRETCH CAST FILM, the average monthly production capacity of more than 1,000 tons and owned more sets of automatic Rewinding, Slitting and Cutting equipment, production various specification of Bopp Packing Tape, Masking Tape, Cloth Duct Tape and etc., monthly to provide the customer more than 100 containers of 40 ft, the main export to Hong Kong and worldwide. The factory has quality and certificate of recognition, can provide the certificate of ISO9001, SGS, ROHS, UKAS and so on. Welcome to visit our factory.



東莞南天塑料製品有限公司位於東莞市大朗鎮，佔地90,000平方尺，為香港著名包裝進出口批發商捷力亞洲企業有限公司獨家投資，專業生產低密度聚乙稀拉伸膜(纏繞膜)，BOPP封箱膠紙，美紋紙及布基膠布等。

香港捷力亞洲企業有限公司，擁有超過十年豐富經驗，在香港經營進出口批發包裝機器及材料業務，每年營業額高達美金150,000,000. 因業務所須，並為增加對客戶提供最優良的服務及最高質量的產品，於2010年投資超出美金200,000,000，在東莞市大朗鎮購地90,000平方尺，自建廠房，引進最新最先進全自動擠出流延膜機生產線三條，專業生產高質量雙向拉伸膜，每月平均生產量達1000多噸，另購置多台全自動複捲分條及分切設備，生產不同規格的BOPP封箱膠紙，美紋紙及布基膠布，每月可給客戶提供超過100多個40尺貨櫃，主要出口香港及世界各地。本廠已進行質量及管理確認證明，可提供ISO9001,SGS,ROHS及UKAS等證書，歡迎各界來廠參觀指導。

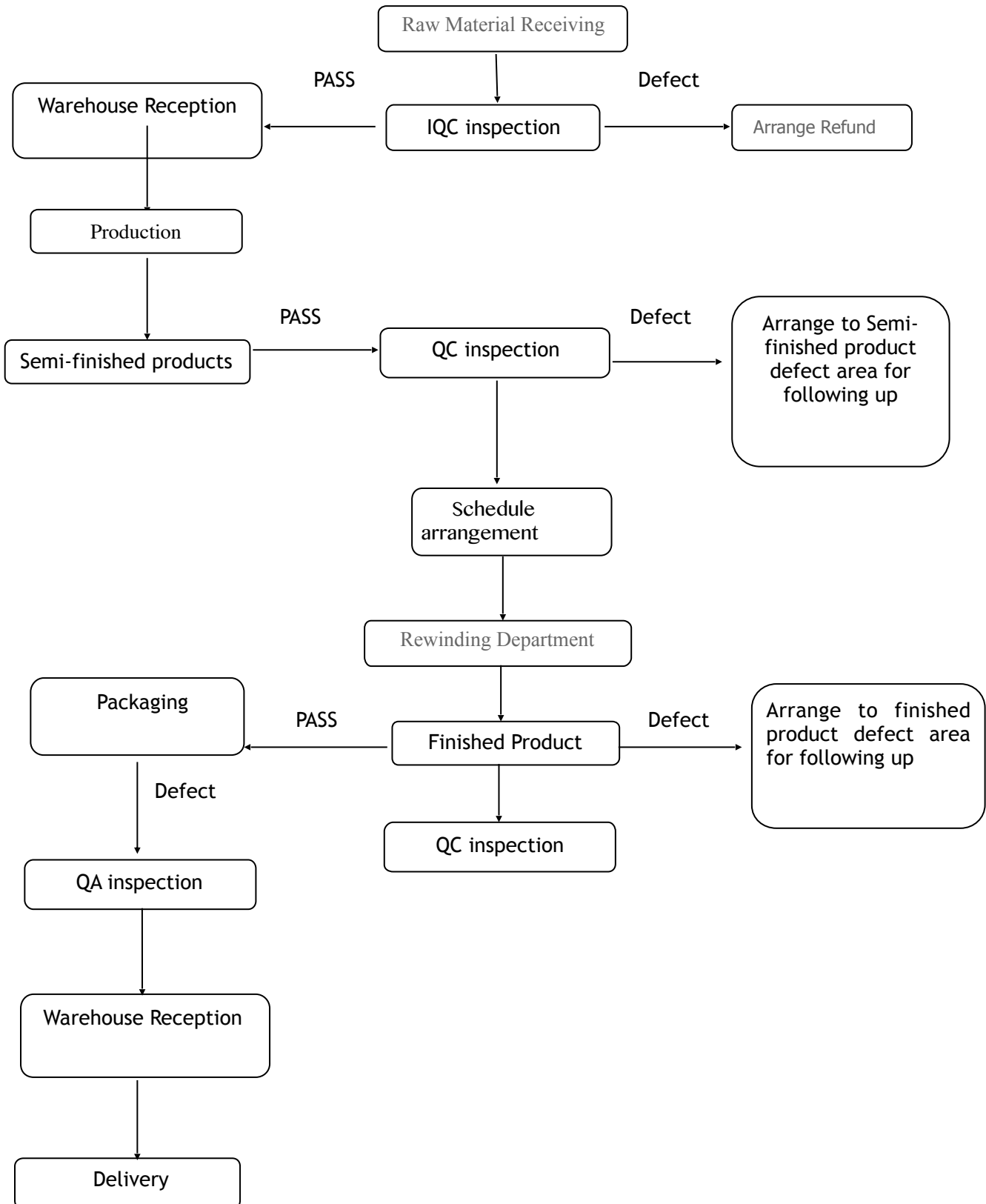




Our office support excellent service and professional working attitude. Your inquiry and question will be able to reply within 24hours during working time. We will support you with competitive service and product.

我們的業務員竭誠為客戶提供最優質的服務, 客戶的詢問一般可在24小時內處理.

Factory production flow chart



I. Production line:

Our production lines meet our production capacity for assembly, QC, calibration and packing with ISO9001 manufacturers.

可以符合我們多樣產品的生產, 依據ISO-9001規格管理及生產.



Providing advanced automatic LLDPE STRETCH CAST FILM production in order to mass production, high quality, more efficient, and cost reduction.

為了大量生產，高品質，更高效，並降低成本。引進最新最先進全自動擠出流延膜機。



Automatic rewinding slitting device, high accuracy, reduce defective.
自動收卷分切裝置，準確性高，減低次品。



Large biaxial automatic cutter

大型雙軸自動切臺



II. Incoming goods area

Stretch film is produced by imported raw materials, industrial materials systematically stored in the storage area

生產纏繞膜是採用進口的原料，工業原料有系統地存放在存放區



Systematically collect industrial materials into the receiving area, waiting for the professionals QC inspection

有系統地收取工業原料進入收貨區，等待專業人員進行QC驗貨



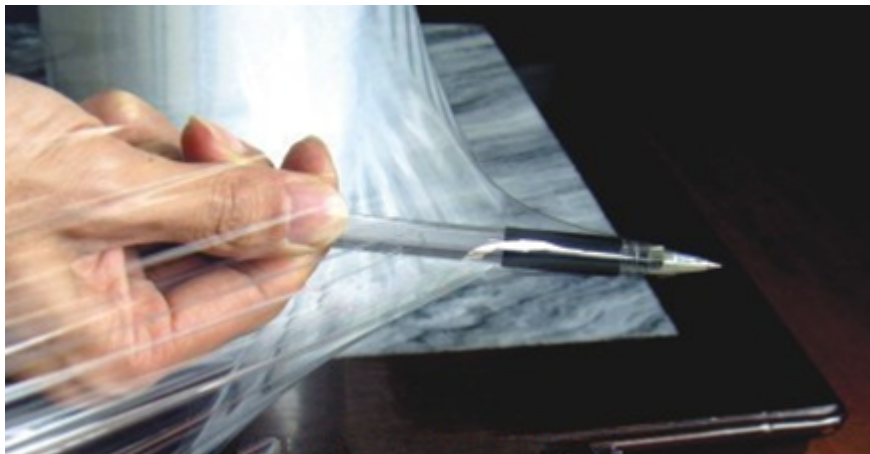
Stretch parent roll will arrange to display area when QC inspection succeed.
纏繞膜母卷，通知QC驗貨成功，安排到擺放區。



Testing Lab

Real testing photo, stretch film with high tensile strength, high resistance to puncture a strong recovery, high transparency, tear strength advantages and so on.

測試拉伸膜實景，纏繞膜具有高拉伸強度、高回收抗刺穿強、透明度高、抗撕裂強度高等優點。



III. Defective Goods Area

Placed defective good area and Professional inspector will investigation the reason and follow up.

擺放不合格的產品，以待專業人員查出原因，作出跟進。



IV. Final Products Warehouse

Our finished products will be systemically arrange into warehouse after QA inspection succeed

這是我們的成品，通過QA驗貨成功，有系統地安排進入倉庫



V. Fire Exit Sign / Fire Extinguisher

Fire instrument is very important. To ensure that every employee has working in a safety working environment, we check fire instrument once a day in the morning in order to protect our security.

我們十分重視消防方面，為能保障我們的安全，每天早上作出檢查一次，確保每位員工有安全的工作環境。



VI. Dormitory:

Providing better staff quarters to ensure that all employees have a comfortable rest environment, in order to increase productivity and a sense of belonging.

提供完善員工宿舍，確保各員工有舒適休息環境，增加生產力及歸屬感。



We welcome you to visit our factory

Thank you !